

Windchill® Workgroup Manager for SolidWorks®

Delivering the Power and Benefits of Windchill to the SolidWorks Environment

Designers can perform everyday design tasks in their familiar MCAD environment, while using Windchill to manage SolidWorks data throughout its lifecycle.

Managing SolidWorks data within Windchill allows you to capture and control all of your design information within a single enterprise environment, manage the data under a single product structure, and easily leverage that information across the extended organization in a controlled manner.

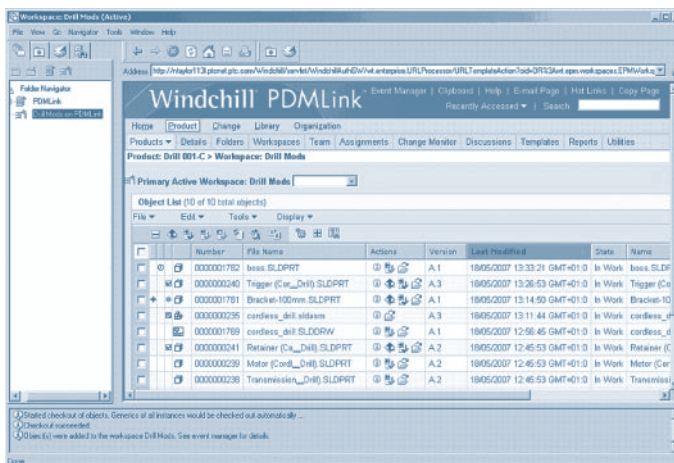
Key Benefits

Improve Collaboration

- Fully incorporate the use of SolidWorks data in product development processes which span multiple organizations
- Extend the sharing of design data beyond engineering, departmental and corporate boundaries using standard Internet technology

Improve Data Quality

- Eliminate mistakes associated with duplicate or incomplete data by managing data from multiple CAD systems in a single, controlled location under the umbrella of a single product structure
- Centralize the management of business processes such as change control
- Provide all relevant groups with accurate, up-to-date, product content information that's held in a single location



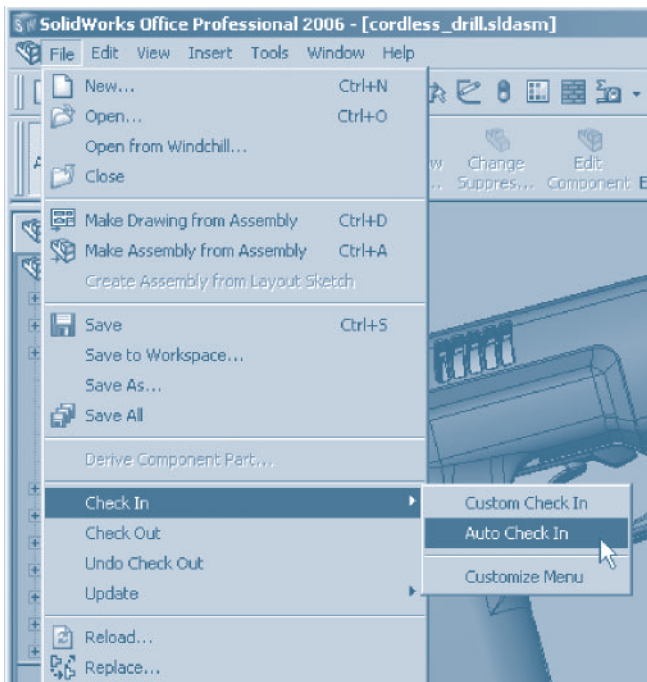
The Windchill Workgroup Manager for SolidWorks understands SolidWorks data and file types, and the relationships that can exist between that data.

Improve Engineer Productivity

- Improve efficiency through design data reuse and a reduction in the number of design steps
- Embed Windchill actions within the SolidWorks application, enabling the designer to focus on design activities rather than data management
- Minimize engineer interruptions by utilizing background processes to upload files to Windchill, thus allowing the designer to continue using SolidWorks without having to wait for database actions to complete

Increase Enterprise Efficiency

- Reduce the number of product development systems by providing one system that can manage multiple sources of data (different CAD and documentation formats)
- Enforce standard design processes across multiple design projects and organizations



Embedded Windchill Workgroup Manager menu option within the SolidWorks environment.

Features

Support Key SolidWorks Data File Types and Features

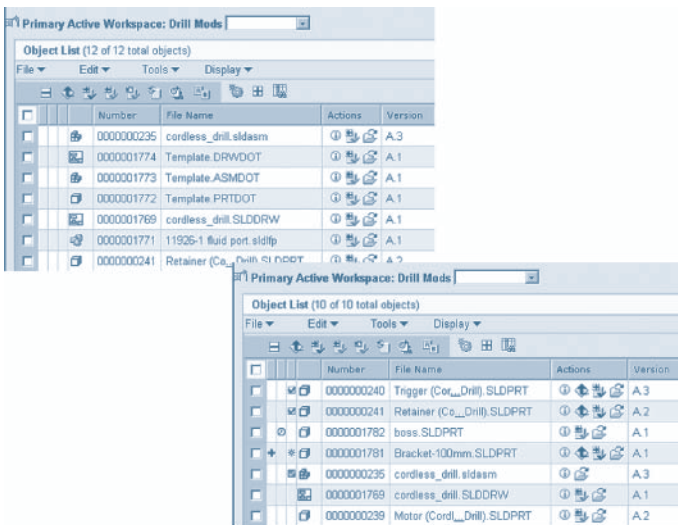
- Store different SolidWorks file types in Windchill, including: .sldprt, .sldasm, .slddrw, .sldlfp, .prt, .asm, .drwdot, .edrw, .eprt, .easm and .sldprt
- Recognize relationships and dependencies between SolidWorks files (e.g., between parts, assemblies and drawings), and represent those references in the Windchill environment
- Automatically associate files related to the SolidWorks drawing, such as images, DXF files and Design Table spreadsheets
- Open files directly in SolidWorks when browsing or searching Windchill
- Automatically manage local working directories with the Windchill Workgroup Manager
- Manage SolidWorks configurations
- Copy or rename data in the Windchill environment while maintaining referential integrity between SolidWorks files

Exchange Attribute/Property Information between SolidWorks Files and the Windchill Environment

- Expose SolidWorks attributes to Windchill for searching purposes
- Make Windchill attributes available within SolidWorks for purposes such as displaying values on drawing borders
- Allow SolidWorks attributes to be edited in the Windchill environment
- Eliminate the need to enter attributes in both the Windchill and SolidWorks environments
- Reduce the amount of time designers spend entering information in SolidWorks by having certain attributes, such as information on drawing borders, automatically populated by Windchill

Integrate the SolidWorks Environment within Windchill and its Related Enterprise Processes

- Utilize Windchill tools for managing SolidWorks data within the product structure, development process, and lifecycle
- Enable Check-In and Check-Out of named design baselines, latest configurations, or criteria such as latest released configuration or effectivity date
- Manage SolidWorks data within the Windchill engineering change management process
- Eliminate BOM redundancy and errors by synchronizing the enterprise BOM with the SolidWorks structure
- Allow SolidWorks data to be part of an enterprise BOM structure that can contain data from many different CAD systems
- Enable version control on SolidWorks data to record complete traceability of changes and design development
- Enable concurrent development, as Windchill can track all related activities and convey that information to other members of the design team
- Utilize status icons to quickly inform SolidWorks designers and other users about the condition of SolidWorks data within Windchill



Display SolidWorks file types as well as different status icons within Windchill.

Embed Windchill in the SolidWorks Application

- Open SolidWorks files, stored in Windchill, directly from SolidWorks
- Perform key Windchill actions from within the SolidWorks environment, such as Revise, Check-In and Check-Out
- Inform SolidWorks users on any relevant Windchill events via pop-up messaging system
- Upload SolidWorks files to the Windchill database with background processes
- Use a comprehensive set of preferences to personalize and streamline your SolidWorks interaction with Windchill

Exchange and Share Design Data in a Fully Collaborative Environment

- Enable controlled sharing of SolidWorks data across the enterprise
- Utilize generic visualization collaboration tools to provide visibility of SolidWorks designs to the entire enterprise, regardless of whether the user has access to or knowledge of SolidWorks
- Make SolidWorks design data available to external audiences who have the proper system access

Platform Specifications

- Prerequisite:
 - Windchill® PDMLink®, Windchill® ProjectLink™
- Operating Systems
 - Microsoft Windows (32-bit): XP
- Browser: Internet Explorer v6.0 and 7.0
- Languages: English, Chinese (Traditional), Chinese (Simplified), German, Italian, Japanese, Korean, French, and Spanish



To learn more about Windchill Workgroup Manager for SolidWorks, visit:
<http://www.single-sourcing.com/>

NOTE: The timing of any product release, including any features or functionality, is subject to change at PTC's discretion.

Copyright © 2007, Parametric Technology Corporation (PTC). All rights reserved. Information described herein is furnished for informational use only, is subject to change without notice, and should not be construed as a guarantee, commitment, condition or offer by PTC. PTC, Windchill, and all PTC product names and logos are trademarks or registered trademarks of PTC and/or its subsidiaries in the United States and in other countries. All other product or company names are property of their respective owners.