

Windchill RequirementsLink

Expand the power of Windchill to manage, track and cross-reference product requirements as part of the overall product development process.

Windchill RequirementsLink helps ensure that customer and market requirements have been satisfied by designs, and properly verified during development.

Insufficient visibility into requirements during the development process makes it difficult to determine: whether requirements are satisfied by underlying product designs, whether design changes will impact requirements, or if requirement changes will impact designs, schedule and cost. Windchill RequirementsLink – an integral option for Windchill® PDMLink® – lets you expand the powerful capabilities of Windchill to include the management of product requirements, including change control and associating requirements with specific product structures and design content.

Key Benefits

Improve productivity and efficiency

- Trace decomposition of requirements into designs, from beginning to end
- Easily understand complex relationships between requirements and the product structure
- Leverage a single, common change process for both requirements and product designs

Facilitate collaboration and improve communication

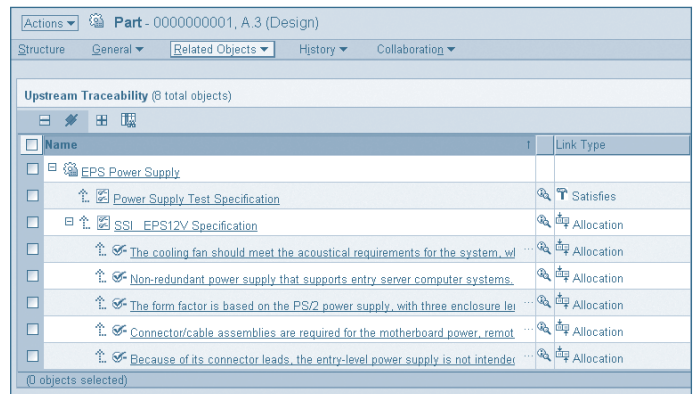
- Publish requirements and their context, along with product design data, to all team members
- Collect reference material, action items, discussions and decisions in context of the requirements
- Monitor how well a product complies with customer expectations

Reduce the cost of change

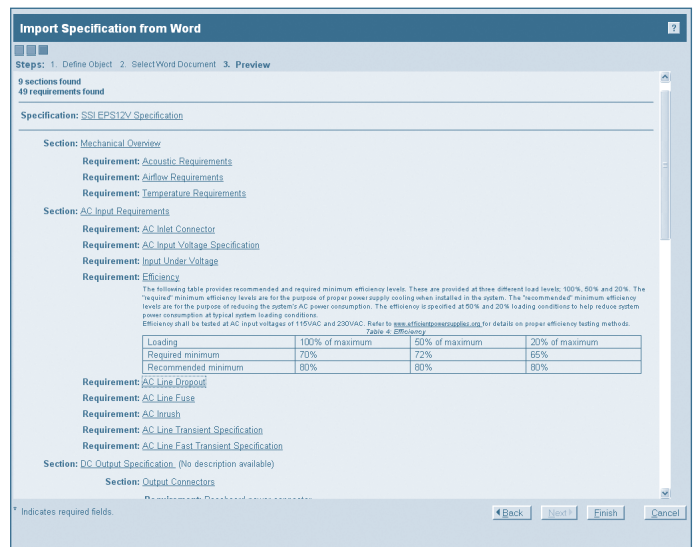
- Eliminate discrepancies between the latest requirements and the current design
- Manage and control requirements with the same tools and processes used to manage product data
- Understand relevant requirements when assessing the impact of a change

Accelerate time-to-market

- Identify overlooked customer requirements earlier
- Focus on proper verification of requirements sooner



Windchill RequirementsLink allows you to relate requirements to specifications and parts.



Import requirements directly from Microsoft Word into Windchill RequirementsLink.

Features

Capture, manage and leverage product requirements

- Create and modify discrete requirements using rich text and tables through a browser-based interface
- Import specification documents from Microsoft Word® (Optional)
- Import and update one or multiple requirements using Microsoft Excel®
- Hierarchically structure requirements into specifications, and track their relationships

Multi-level traceability

- Decompose and link requirements to derived requirements
- Link and synchronize requirements to design analysis documentation
- Allocate requirements to products, assemblies or parts
- Easily view traceability from any requirement, part or document
- Navigate multiple levels of traceability to view indirect relationships, and analyze design intent or the impact of a change

Easily collaborate on requirements

- Access requirements from any part or document
- Associate reference items, discussions and action items with requirements
- Share requirements to project workspaces for reviews with external stakeholders
- Collect comments, feedback and approvals through requirement-specific workflows
- Use Suspect Flags to effectively and informally communicate change during periods of early design discussions

Verify requirements

- Track which requirements in a specification require verification
- Easily create and link verification methods to each requirement
- Establish traceability between requirements and verification requirements to ensure all appropriate requirements have an appropriate verification method
- Capture verification status, results and test configurations

Control

- Track requirement and specification changes through revision control
- Manage requirements and specifications through predefined lifecycles
- Baseline requirements at key product development milestones
- Easily compare requirements and specifications to earlier versions or specific baselines
- Capture the complete history of a requirement over time

Reports

- Export requirements to HTML and PDF
- Report on orphaned, or overlooked, requirements
- Generate traceability matrices between two specifications to show where and how requirements are satisfied
- Report on verification status and needs

Tailor requirements to your specific needs

- Define priority or health status to facilitate analysis and ranking of activities
- Add customer-specific attributes for process specific needs
- Create different types of requirements or specifications; each with their own workflows, lifecycles and attributes
- Create different types of links each with their own meaning and constraints

Integral with Windchill PDMLink

- Share common workflow and notification tools between the Design and Requirements team
- Common set of change management processes
- Common set of security and access control definitions
- Common set of baseline tools
- Scalable, Web-based architecture

Platform Specifications

- Prerequisite: Windchill PDMLink
- Server Operating Systems:
 - Microsoft Windows® (32-bit and 64-bit): XP®, Vista®, Windows 2003 Server
 - Unix® (32-bit and 64-bit): Solaris®, HP-UX®, AIX®
 - Linux® (64-bit): Red Hat Enterprise Linux 4
- Browser: Internet Explorer® v6.0 & 7.0; Mozilla® Firefox v2.0 & higher
- Database: Oracle® 10g and SQL Server 2005
- Languages: English, Chinese (Traditional), Chinese (Simplified), French, German, Italian, Japanese, Korean, Spanish



To learn more about Windchill RequirementsLink, please visit our website at:
<http://www.single-sourcing.com/>

© 2009, Parametric Technology Corporation (PTC). All rights reserved. Information described herein is furnished for informational use only, is subject to change without notice, and should not be construed as a guarantee, commitment, condition or offer by PTC. PTC, the PTC logotype, CoCreate and all PTC product names and logos are trademarks or registered trademarks of PTC and/or its subsidiaries in the United States and in other countries. All other product or company names are the property of their respective owners.