

Windchill® Gateway for I-deas® TDM

Capture I-deas TDM design data within Windchill as part of the overall product configuration

Designers can now perform everyday design tasks in their familiar I-deas TDM environment, while leveraging the powerful process and content management capabilities of Windchill, to manage the resulting design data throughout its lifecycle.

Incorporating I-deas TDM data within Windchill allows you to capture and control your design information within a single enterprise environment, manage the data under a single product structure, and easily leverage that information across the extended organization in a controlled manner.

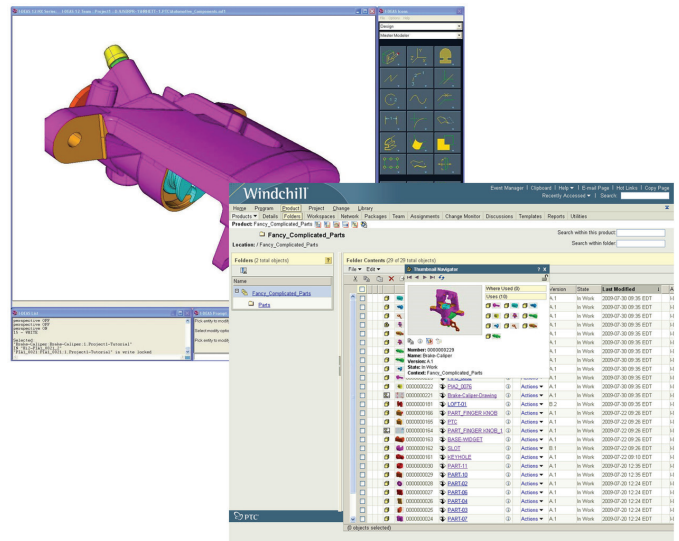
Key Benefits

Improve Collaboration

- Include I-deas TDM design data within the wider enterprise (i.e., business processes and procedures)
- Extend the sharing of design data beyond engineering departmental and corporate boundaries using standard Internet technology

Improve Data Quality

- Eliminate mistakes associated with duplicate or incomplete data by managing content from multiple MCAD and ECAD/EDA systems in one, controlled location under the umbrella of a single product structure
- Centralize the management of business processes, such as release procedures and change control
- Provide all groups with accurate, up-to-date, relevant product content information that's held in a single location



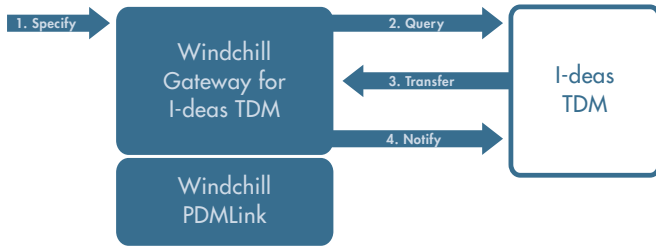
The Windchill Gateway for I-deas TDM solution extracts product structures from I-deas and publishes them in the Windchill environment.

Increase Enterprise Efficiency

- Improve configuration management efficiency by having one system manage multiple sources of data (e.g., different CAD and documentation formats)
- Enforce standard design processes across multiple design projects and organizations

Improve Engineer Productivity

- Increase operating efficiency by reusing design data and reducing the number of design steps



Simple Integration Steps

1. Specify collection rules on what content should be transferred.
2. Query I-deas TDM server to collect content as defined by the collection rule.
3. Transfer the collected CAD and metadata content from I-deas TDM into Windchill PDMLink® via a package file.
4. Notify I-deas TDM that the data has been successfully transferred. Denote the transfer in I-deas TDM via a notification attribute.

Features

Support Key I-deas TDM Data and Features

- Store different I-deas TDM file types—parts, assemblies and drawings—in Windchill and establish that these files were authored using I-deas
- Recognize I-deas Document-to-Document links, dependencies, and representations of those references in the Windchill environment

Transfer I-deas Attribute/Property Information to the Windchill Environment

- Auto-associate I-deas attributes with Windchill parts
- Map TDM attributes to Windchill for full support of Instance Based Attributes (IBAs)
- Enable I-deas attributes to be edited in the Windchill environment

Exchange and Share Design Data in a Collaborative Environment

- Enable controlled sharing of I-deas data across the enterprise
- Apply generic visualization collaboration tools to provide visibility of I-deas designs to the entire enterprise, regardless of whether users have access to, or knowledge of, I-deas
- Make I-deas design data available to external audiences that have proper system access

Automatically Transfer Data into Windchill via Scheduled Tasks

- Define rules and conditions for managing data
- Define transfer schedule according to user-defined rules
- Schedule tasks to announce when content should be published
- Publish tasks

Platform Specifications

- Prerequisite:
 - Windchill PDMLink
 - I-deas v12, NX I-deas 6 (I-deas v13) or higher
- Operating Systems:
 - Microsoft® Windows® XP®, (32-bit)
 - Microsoft Windows Vista® (64-bit)
- Browser:
 - Internet Explorer® v6.0 & 7.0
 - Mozilla® Firefox v2.0 & higher
- Database: Oracle® 10g and SQL Server 2005
- Languages: English

For up-to-date platform support information, please visit: www.ptc.com/partners/hardware/current/support.htm

©2009, Parametric Technology Corporation (PTC). All rights reserved. Information described herein is furnished for informational use only, is subject to change without notice, and should not be construed as a guarantee, commitment, condition or offer by PTC. PTC, the PTC logotype, Windchill, PDMLink and all PTC product names and logos are trademarks or registered trademarks of PTC and/or its subsidiaries in the United States and in other countries. All other product or company names are the property of their respective owners.

4761-I-deas Gateway-DS-0809