

# Arbortext® Parts Catalog Manager for S1000D

Streamline initial provisioning and illustrated parts catalog production

Arbortext Parts Catalog Manager for S1000D enables the creation, delivery, receipt and review of illustrated parts data (IPD) in accordance with the Aerospace & Defense specification S1000D for technical publications.

Arbortext Parts Catalog Manager for S1000D provides the most cost effective method of compiling illustrated parts catalogs. And since it is fully integrated with Arbortext Common Source Database (CSDB) for S1000D, the Arbortext Parts Catalog Manager for S1000D can update information directly within the Arbortext CSDB for S1000D, to easily generate illustrated parts data modules and numerical indexes which are stored in the CSDB as reusable SGML and XML content.

## Key Benefits

### Generate illustrated parts catalogs rapidly with an integrated S1000D solution

- Accelerate data acquisition, compilation and review cycles through integration with all Arbortext product information delivery products for Aerospace & Defense (A&D)
- Improve process efficiencies and minimize manual data entry by repurposing data both from Arbortext product information delivery solutions for A&D and external logistics support analysis record (LSAR) applications

### Ensure project success with the market-leading solution

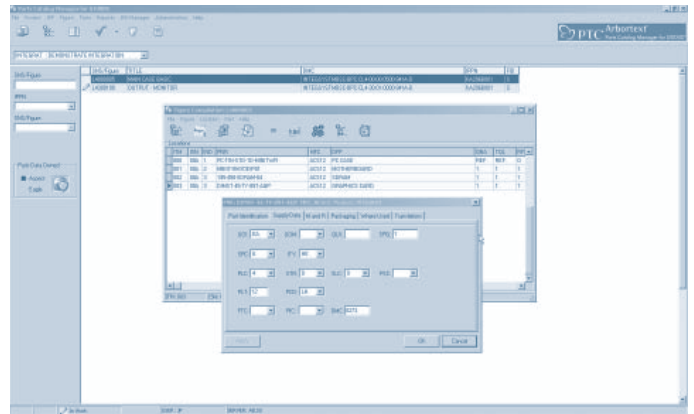
- Arbortext delivers the industry's leading A&D product information delivery solutions, with the industry's largest number of active S1000D initial provisioning installations and illustrated parts catalogs

## Features and Capabilities

### Data Acquisition and Project Configuration

Arbortext Parts Catalog Manager for S1000D provides the industry's most flexible data acquisition, compilation and validation capabilities, including:

- Data acquisition and compilation – initial provisioning data is acquired and compiled from sources including Logistic Support Analysis (LSA) data transfers, Microsoft Excel spreadsheets or manual data entry.
- Data handling – advanced data handling capabilities ensure accurate and timely access to data.



Initial provisioning data is compiled from multiple sources, including LSAR, Microsoft® Excel® spreadsheets, and manual data entry files.

- Import Microsoft Excel initial provisioning data for transfer to Arbortext CSDB for S1000D
- Provide data cloning for existing initial provisioning data compilations to be repurposed into new or updated projects
- Support global part replace, to universally update obsolete or superseded provisioning information
- Support multiple language descriptions for parts and locations
- Generate reports for project and administrative status
- Multiple language support for English, German, Portuguese, Russian and simplified Chinese
- Multiple project configuration – operates as an integrated solution either with Arbortext CSDB for S1000D, with LSAR applications, or with any combination of these sources
  - The advanced multi-project, process-driven interface links multiple projects and shares common information between different projects
  - With the Arbortext LSA Interface for S1000D, the LSAR-driven compilation capability creates initial provisioning data based on the document code within the LSAR data source. It also creates catalog sequence numbers automatically, and enables users to select the LSA code number and add key initial provisioning data prior to the data transfer
  - For Non-LSAR compilations, the CSDB queries the Standard Number System (SNS) to generate the initial provisioning figure number and directly link the SNS to the data module code (DMC) in Arbortext Parts Catalog Manager for S1000D

### Comprehensive Validation

Arbortext Parts Catalog Manager for S1000D offers Aerospace & Defense business rules-validation, which is accessed from within the data compilation area. A&D business rules may be enabled or disabled to suit project requirements, and unique, project-specific validation rules may be added on request.

### Illustrated Parts Data Generation

Arbortext Parts Catalog Manager for S1000D is tightly integrated with Arbortext CSDB for S1000D and produces illustrated parts data modules by leveraging technical product data stored within the CSDB.

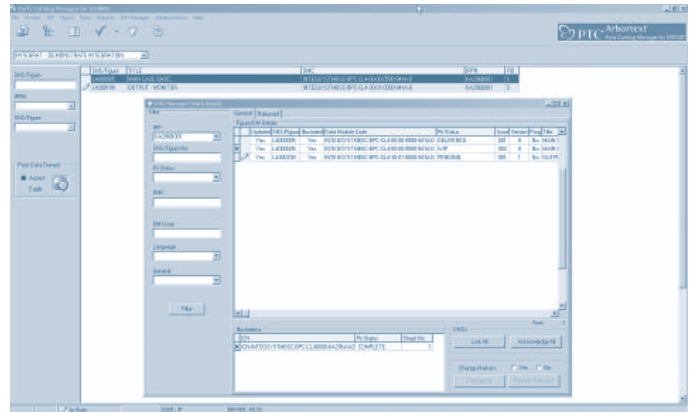
- Cross-referencing the standard numbering system allows you to create data module codes when creating catalog sequence figure numbers for initial provisioning data.
- Data transferred to the CSDB reflects the data stored in the main compilation area. Initial provisioning data updates are managed in the same way, and changes are reflected in the illustrated parts data modules once it's re-released from the Arbortext Parts Catalog Manager for S1000D.
- Electronic 2D & 3D illustration entities are loaded into the CSDB and linked to the illustrated parts data module to be viewed from within Arbortext Parts Catalog Manager for S1000D, to review illustrations as part of the initial provisioning data review process. Arbortext IsoView® users can also view online initial provisioning data illustrations within Arbortext Parts Catalog Manager for S1000D, which are allocated within CSDB entities.
- The illustrated parts data manager utility extracts information from the compilation area to pass to the CSDB. The illustrated parts data manager uses the provisioning data to acknowledge and update the new CSDB entities with the illustrated parts module and the numerical indexes.

### Standards Compliance

Arbortext product information delivery software for A&D has been supporting global S1000D projects since 1995, and today features the highest number of active installations. Arbortext Parts Catalog Manager for S1000D fully supports each version of the S1000D standard, up to and including Issue 3.

### Arbortext product information delivery software for A&D provides integrated compliance solutions for S1000D, S2000M chapter 1, and SCORM

By extending the value of Arbortext Parts Catalog Manager for S1000D with the complete Arbortext product family along with the PTC Product Development System, you can gain even greater efficiencies – and enable further compliance – across your enterprise. Additional Arbortext product information delivery software for A&D include:



Provisioning data is used to acknowledge and update the new CSDB entities with the illustrated parts module and the numerical indexes.

**Arbortext LSA Interface for S1000D** is an application interface that allows Arbortext Parts Catalog Manager to acquire initial provisioning figure data and parts information from the logistics support analysis record (LSAR). For Arbortext CSDB for S1000D, the Arbortext LSA Interface links LSA record maintenance tasks to data module codes within the CSDB.

**Arbortext CSDB for S1000D** is a complete technical content management solution meeting the specific requirements for the Aerospace & Defense sectors, fully supporting the S1000D international specification for technical publications.

**Arbortext LCMS for S1000D** extends the Arbortext CSDB for S1000D into a full-featured, SCORM-compliant Learning Content Management System (LCMS).



To learn more about how Arbortext can help your company create and delivery high-quality product information, please visit our website at: <http://www.single-sourcing.com/>