

# Windchill ProjectLink On Demand

## PLM Benefits Without The Hurdles



Accredited-Business Partner

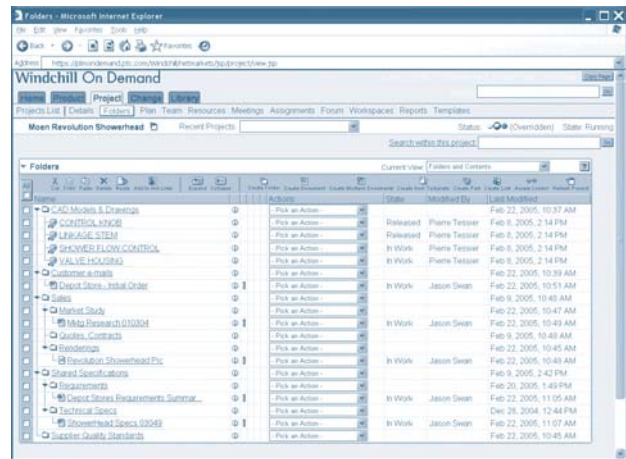
- Fast to deploy—go live in days
- Access anytime, anywhere, regardless of location
- Monthly subscription enables instant scalability without a large upfront investment
- One integral PLM solution for your company
- IBM hosting—security, performance, and reliability

A complex product development environment is no longer a problem unique to large manufacturing companies. Small—and medium—sized organizations face the same challenges: increased complexity of products, greater amounts of digital product information, and geographically dispersed teams. The solution to these challenges has historically been to deploy an on-premise, enterprise Product Lifecycle Management (PLM) solution—something that only large companies could pursue. While being able to meet the specific needs of large companies, these enterprise solutions typically require a larger upfront investment, dedicated IT resources, and longer—deployment timelines.

## Product Lifecycle Management For All

With PTC PLM On Demand, these hurdles are eliminated for small and medium sized companies that recognize the need for PLM but lack the resources—either human or financial—or are not interested in the overhead of managing a PLM solution in-house. Fear PLM no more—PTC PLM On Demand, delivered as a service and hosted by IBM, is your easy-to-use, comprehensive solution. It has all the benefits of PLM such as data vaulting, document management, direct multi-CAD integrations, change, collaboration, project management, and visualization, without all the hurdles:

- Requires only an Internet connection and a Web-browser—available around the globe
- Flexible per user per month subscription license (that covers software, hardware, maintenance, hosting, etc.) enables easy growth as your needs change
- Eliminates complexity, time, cost, and risk of installation, maintenance, and upgrades
- Comprehensive understanding of Pro/ENGINEER data and relationships
- Only solution that combines engineering and enterprise data management in a single offering, eliminating the need and cost of integrating separate applications



Easy-to-use, Web-based interface with secure collaboration spaces—where anyone, inside or outside your company—can check in/out information, including CAD files

## Collaborative Project Management for Extended Product Development Teams

As part of PTC PLM On Demand, Windchill ProjectLink On Demand makes it easy to overcome time and distance for effective collaboration and project management. Windchill ProjectLink On Demand facilitates innovation by providing all the tools necessary to bring globally dispersed design teams—both internally and externally—together as if working in the same room. With its unparalleled visualization and a full understanding of CAD data, Windchill ProjectLink On Demand makes it easy for all team members to share accurate information, provide feedback, and together deliver tomorrow's leading products.

And it can be seamlessly combined with Windchill PDMLink On Demand to consolidate scattered internal islands-of-information and improve information reuse, change management, and configuration management throughout the product lifecycle.

## Benefits

Windchill ProjectLink On Demand delivers realizable benefits such as:

- Reduced product development cycle times
- Increased quality by having earlier and more frequent design reviews within the design process
- Improved on-budget, on-time project completion
- Improved customer satisfaction with frequent design participation
- Reduced travel expenses

## Comprehensive Capabilities

### Simple

#### Web-based

- Role-based access to projects requires only a Web browser
- Home page with current work, tasks, personal notebook, and subscriptions/notifications

#### Self-Administration

Create and manage cross-functional projects on your own. Set up folders and add content from your desktop and invite team members by role using standard email.

#### Embedded Visualization

- Locate and verify content faster and easier with 2D or 3D interactive thumbnails
- Validate engineering/CAD data without requiring the original application and easily add feedback with markups associated to iterations

### Powerful

#### Secure Design Collaboration

Unite the extended team with shared information views and collaborate using Project and item-specific discussion forums and online meetings.

#### Project Management

Manage project plans with milestones, activities, tasks, deliverables, and resources. Jump-start processes such as Six Sigma, APQP, and NPI (PACE and Style Gate) using optional workflow-driven templates.

#### Project Information Management

Manage and control access to documents, CAD models, BOMs, etc. using folders with document management, search, check-in/out and history.

### Connected

#### Part of PTC's Product Development System

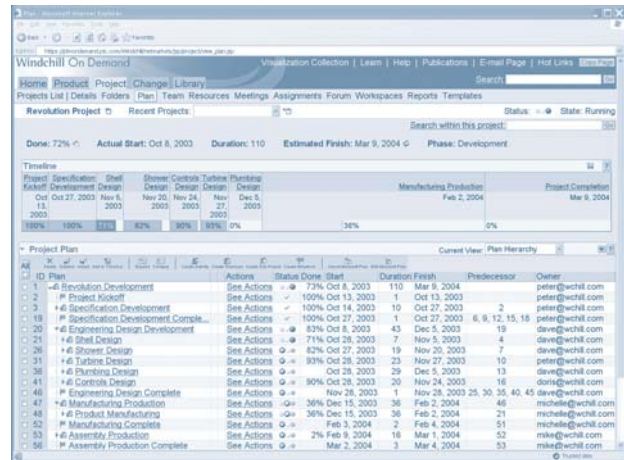
Seamless user experience with Pro/ENGINEER® Wildfire™ and Windchill PDMLink On Demand.™

#### Integrated with Other Applications

- Direct MCAD integrations for Pro/ENGINEER, AutoCAD®, CATIA® V5, Unigraphics®, Autodesk Inventor®, and SolidWorks®
- Drop-down menus within Microsoft® Office applications for search and check-in/out
- Bi-directional interoperability with Microsoft Project

## Technical Support

PTC is an ISO-9001-accredited organization with award-winning, online support tools to meet the needs of global organizations.



Tracking the status of projects and tasks status and troubleshooting problem areas has never been easier or more accurate for all team members

### Secure, Scalable IBM On Demand Infrastructure

Leave the infrastructure and operations to PTC and the world leader in hosting – IBM. For you, there is no hardware or software to buy, install, or maintain. Service upgrades and access to new capabilities occur seamlessly and transparently.

IBM e-business hosting and monitoring provides access to the security, performance, and reliability features that typically only Fortune 500 customers can afford. Advanced security features at the network, server, and application levels ensure that your intellectual property is protected. And you get optimal performance through a high-performance architecture with load balancing and high-bandwidth Internet access through Tier 1 backbone networks.

### Web-based Training

To help users adopt quickly and be most productive with the service, PTC offers Web-based training subscriptions for users in PTC University. These self-paced classes enable users to take the courses specific to their roles whenever appropriate.



To learn more about Windchill ProjectLink, please visit our website at: <http://www.single-sourcing.com/>

©2005, Parametric Technology Corporation (PTC). All rights reserved. Information described herein is furnished for informational use only, is subject to change without notice, and should not be construed as a guarantee, commitment, condition or offer by PTC. PTC, the PTC Logo, Pro/ENGINEER, and all PTC product names and logos are trademarks or registered trademarks of PTC and/or its subsidiaries in the United States and in other countries. All other product or company names are property of their respective owners.