

# Windchill® Workgroup Manager for AutoCAD®

Delivering the Power and Benefits of Windchill to the AutoCAD Design Environment

Designers can perform everyday design tasks in their familiar MCAD environment while using Windchill to manage AutoCAD data throughout its lifecycle.

Managing AutoCAD-authored data within Windchill allows you to capture and control all your design information within a single enterprise environment, manage the data under a single product structure, and easily leverage that information across the extended organization in a controlled manner.

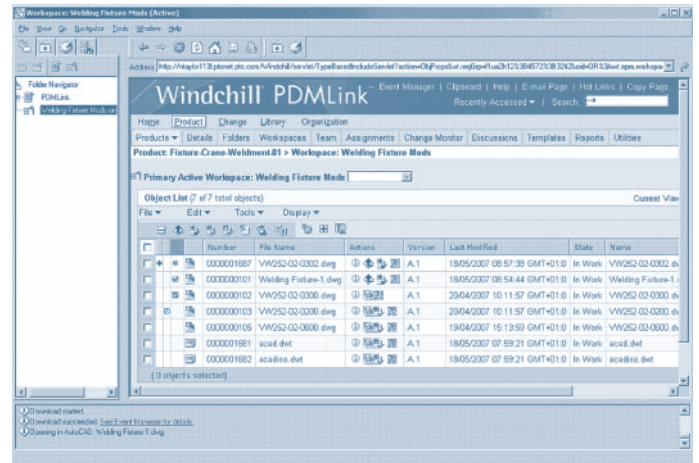
## Key Benefits

### Improve Collaboration

- Fully incorporate the use of AutoCAD data in product development processes which span multiple organizations
- Extend the sharing of design data beyond engineering departmental and corporate boundaries using standard Internet technology

### Improve Data Quality

- Eliminate mistakes associated with duplicate or incomplete data by managing data from multiple CAD systems in a single, controlled location under the umbrella of a single product structure
- Centralize the management of business processes, such as change control
- Provide all relevant groups with accurate, up-to-date, relevant product content information that's held in a single location



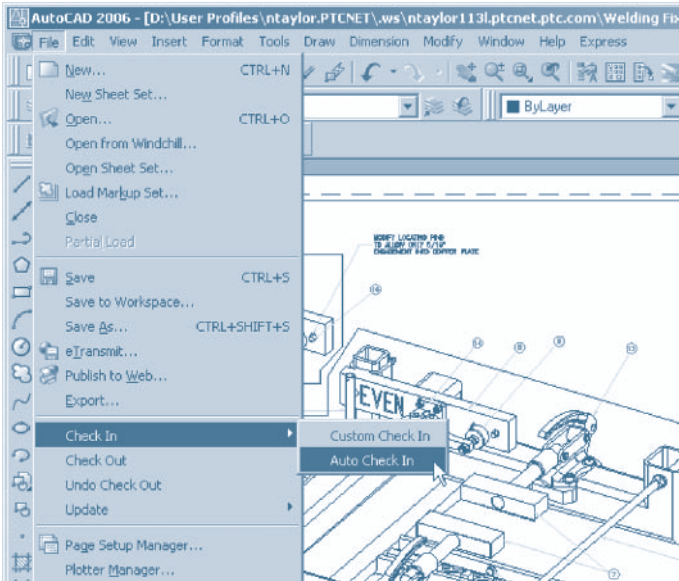
The Windchill Workgroup Manager for AutoCAD understands AutoCAD data and file types, and the relationships that can exist between that data.

### Improve Engineer Productivity

- Increase operating efficiency by reusing design data and reducing the number of design steps
- Embed Windchill actions within the AutoCAD application, enabling designers to focus on design activities rather than data management
- Minimize engineer interruptions by utilizing background processes to upload files to Windchill, thus allowing designers to continue using AutoCAD without having to wait for database actions to complete

### Increase Enterprise Efficiency

- Reduce the number of systems required in product development by providing one system that can manage multiple sources of data (e.g., different CAD and documentation formats)
- Enforce standard design processes across multiple design projects and organizations



Embedded Windchill Workgroup Manager menu option within the AutoCAD environment.

## Features

### Support Key AutoCAD Data and Features

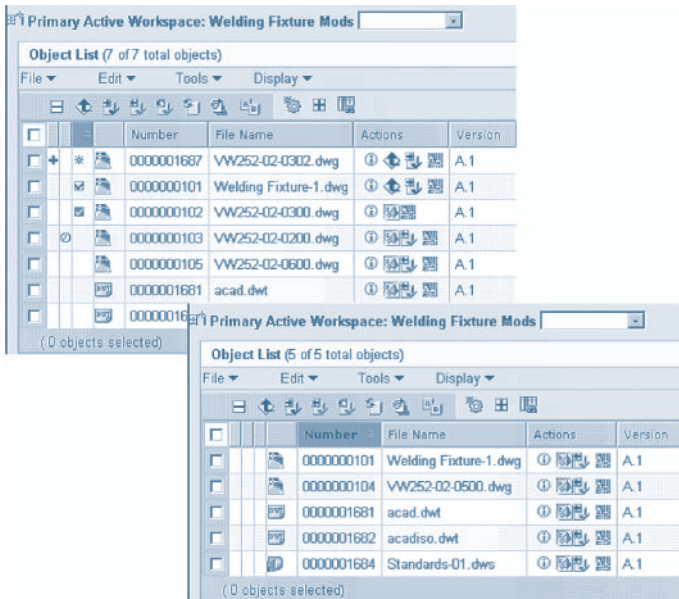
- Store different AutoCAD file types, such as \*.dwg, \*.dwt, \*.dws and \*.dxf in Windchill, and recognize these files as being authored in AutoCAD
- Recognize External Reference (XREF) dependencies and represent those references in the Windchill environment
- Automatically associate files related to the AutoCAD drawing, such as images and DXF files
- Open files directly in AutoCAD when browsing or searching Windchill
- Automatically manage local working directories with the Windchill Workgroup Manager
- Copy or rename data in the Windchill environment while still maintaining referential integrity between AutoCAD files
- Use native AutoCAD icons to make AutoCAD data easily identifiable in Windchill

### Exchange Attribute/Property Information between AutoCAD Files and the Windchill Environment

- Expose AutoCAD attributes to Windchill for searching purposes
- Make Windchill attributes available within AutoCAD for purposes such as displaying values on drawing borders
- Allow AutoCAD attributes to be edited in the Windchill environment
- Eliminate the need to enter attributes in both the Windchill and AutoCAD environments
- Reduce the amount of time designers spend entering information in AutoCAD by having certain attributes, such as information on drawing borders, automatically populated by Windchill

### Integrate the AutoCAD Environment within Windchill and its Related Enterprise Processes

- Utilize Windchill tools for managing AutoCAD data within the product structure, development process and lifecycle
- Enable Check-In and Check-Out of named design baselines, latest configurations, or criteria such as latest released configuration or effectivity date
- Manage AutoCAD data within the Windchill engineering change management process
- Eliminate BOM redundancy and errors by synchronizing the enterprise BOM with the AutoCAD structure
- Allow AutoCAD data to be part of an enterprise BOM structure that can contain data from many different CAD systems
- Enable version control on AutoCAD data to record complete traceability of changes and design development
- Enable concurrent development, as Windchill can track all related activities and convey that information to other members of the design team
- Utilize status icons to quickly inform AutoCAD designers and other users about the condition of AutoCAD data within Windchill



Employ native AutoCAD icons and file types, and display different status icons within Windchill.

#### Embed Windchill in the AutoCAD Application

- Open AutoCAD files, stored in Windchill, directly from AutoCAD
- Perform key Windchill actions, such as Revise, Check-In and Check-Out, directly from the AutoCAD environment
- Inform AutoCAD users on any relevant Windchill events via pop-up messaging system
- Upload AutoCAD files to the Windchill database using background processes
- Use a comprehensive set of preferences to personalize and streamline your AutoCAD interaction with Windchill

#### Exchange and Share Design Data in a Collaborative Environment

- Enable controlled sharing of AutoCAD data across the enterprise
- Utilize generic visualization collaboration tools to provide visibility of AutoCAD design to the entire enterprise, regardless of whether users have access to or knowledge of AutoCAD
- Make AutoCAD design data available to external audiences having proper system access

#### Platform Specifications

- Prerequisite:
  - Windchill® PDMLink®, Windchill® ProjectLink®
- Operating Systems
  - Microsoft Windows (32-bit): XP
- Browser: Internet Explorer v6.0 and 7.0
- Languages: English, Chinese (Traditional), Chinese (Simplified), Spanish, Italian, French, German, Japanese, Korean



To learn more about Windchill Workgroup Manager for AutoCAD, visit:  
<http://www.single-sourcing.com/>

NOTE: The timing of any product release, including any features or functionality, is subject to change at PTC's discretion.

Copyright © 2007, Parametric Technology Corporation (PTC). All rights reserved. Information described herein is furnished for informational use only, is subject to change without notice, and should not be construed as a guarantee, commitment, condition or offer by PTC. PTC, Windchill, and all PTC product names and logos are trademarks or registered trademarks of PTC and/or its subsidiaries in the United States and in other countries. All other product or company names are property of their respective owners.