

Windchill® Workgroup Manager for Pro/ENGINEER® Routed Systems Designer™

Faster, Easier Collaboration on Electrical Wiring Design Data

The Windchill Workgroup Manager (WGM) for Pro/ENGINEER Routed Systems Designer (RSD) combines the power of Windchill with the rich RSD schematic design environment, thus improving collaboration and reducing the chances for error due to incomplete or out-of-date information.

By combining the heterogeneous CAD management capabilities of Windchill with PTC's proven Pro/ENGINEER RSD, you can now capture, control, and share complex schematic design information within a single enterprise environment, and even within a single product structure.

Key Benefits

Improve Collaboration

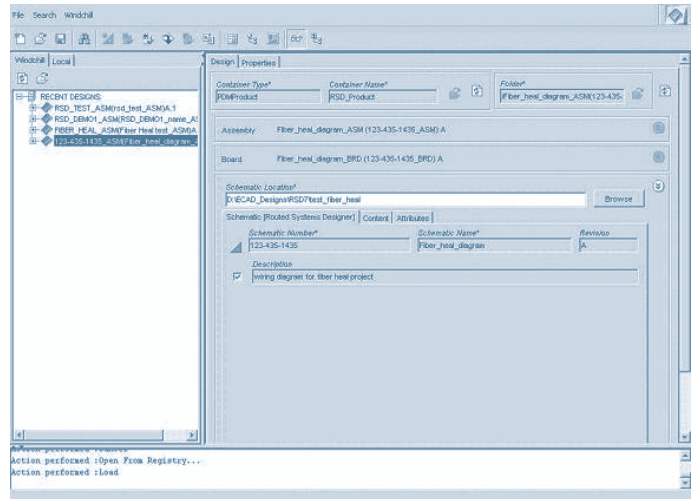
- Share critical design information throughout both the enterprise and the extended value chain, while still maintaining complete access control
- Facilitate design collaboration and data management via a single, central repository provided by Windchill
- Optionally enable communication between users via centrally available markups

Reduce Errors

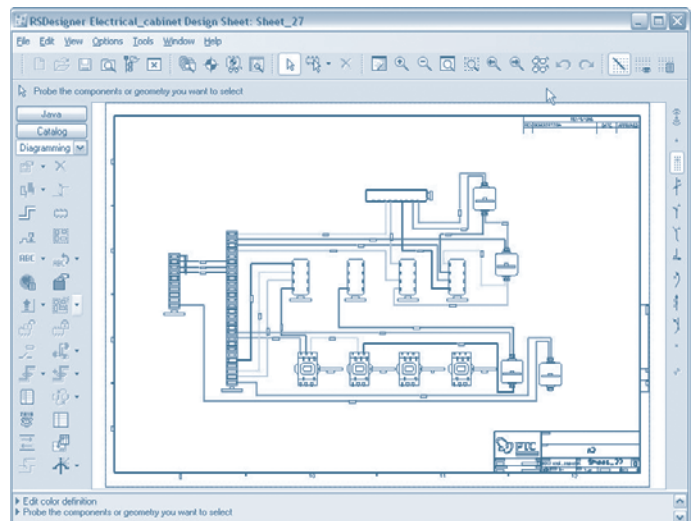
- Precisely control versions of native schematic data while reducing the risk of using out-of-date product information
- Enforce standard design processes

Improve Engineer Efficiency

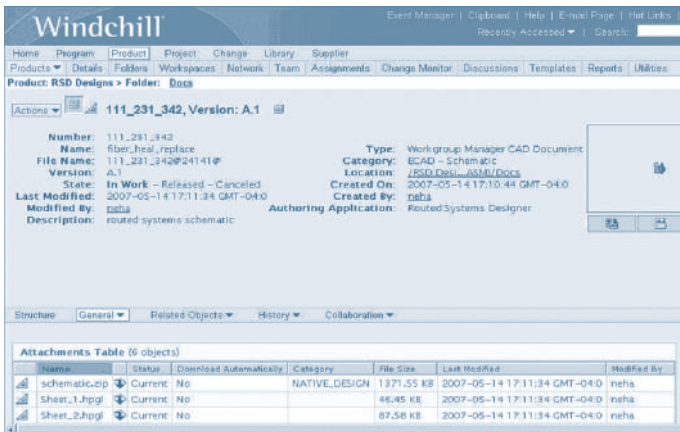
- Increase the reuse of existing designs
- Eliminate redundant design steps
- Optionally allow individual contributors to review schematic designs as they become available



Display schematic information with the Windchill Workgroup Manager for RSD user interface.



Pro/ENGINEER Routed Systems Designer displaying design data.



Pro/ENGINEER Routed Systems Designer design data can now be stored within Windchill® PDMLink®.

Features

Integral Product Data Management

- Access Windchill directly from within the Pro/ENGINEER RSD menu and while providing versioning and iteration management
- Enable non-RSD application users to access, markup and collaborate on critical electrical design data
- Manage version-specific information of RSD designs with specifications, text documents and any other product-related information to facilitate search and retrieval
- Enable users to organize and manage derived design information within Windchill
- Synchronize the enterprise BOM with the electrical design BOM to eliminate redundancies and errors, and provide reports and “where-used” searches
- Generate normalized, lightweight, viewable representations for simple design collaboration within Windchill
- Revise electrical design data managed in Windchill directly from within the Workgroup Manager interface

Change and Configuration Management

- Enable check-in and check-out of latest configurations
- Share electrical data within Windchill across different “contexts” (e.g., products, libraries and projects) for true collaboration in an access-controlled environment
- Achieve direct integration with the process management capabilities of Windchill, such as change management and product release

Extensibility

- Apply extensive customization tools to execute any customer-defined processes, such as design simulation and data clean-up
- Consolidate BOM creation and work with a “clean” BOM in the Windchill environment
- Optionally publish Bill of Materials information into Windchill
- Notify users of valid design data that resides on their desktop

Platform Specifications

- Prerequisite:
 - Windchill PDMLink 8.0 M040 and higher, Windchill® ProjectLink™ 8.0 M040 and higher, or Pro/INTRALINK® 9.0 and higher
 - Pro/ENGINEER Routed Systems Designer Release 6.0 M040 or higher
- Server Operating Systems
 - Microsoft Windows (32-bit and 64-bit): Windows 2003 Server
 - Unix (32-bit): Solaris, HP-UX, AIX
 - Linux (64-bit): Red Hat Enterprise Linux 4
- Browser: Internet Explorer v 6.0 and 7.0
- Database: Oracle 10g and SQL Server 2005
- Languages: English



To learn more about Windchill Workgroup Manager for Pro/ENGINEER Routed Systems Designer, visit:
<http://www.single-sourcing.com/>

Note: The timing of any product release, including any features or functionality, is subject to change at PTC's discretion

Copyright © 2007, Parametric Technology Corporation (PTC). All rights reserved. Information described herein is furnished for informational use only, is subject to change without notice, and should not be construed as a guarantee, commitment, condition or offer by PTC. PTC, Windchill, and all PTC product names and logos are trademarks or registered trademarks of PTC and/or its subsidiaries in the United States and in other countries. All other product or company names are property of their respective owners.