

# Windchill® ProjectLink™

A Proven Solution for Collaborative Project Management throughout the Product Lifecycle

Windchill ProjectLink delivers comprehensive project management and execution capabilities, enabling effective collaboration by your extended product development team regardless of location.

Globally dispersed teams, and the continual need to meet customers' expectations, time-to-market targets, and quality goals necessitate effective collaboration. With Windchill ProjectLink, companies can securely harness the talents and energy of the entire team, inside or outside of your firewall. Through a self-administered virtual workspace, Windchill ProjectLink provides project management capabilities and access to accurate product information at the right time, keeping your team aligned, on track, and moving forward.

## Key Benefits

### Reduce Time-to-Market and Increase Competitive Advantage

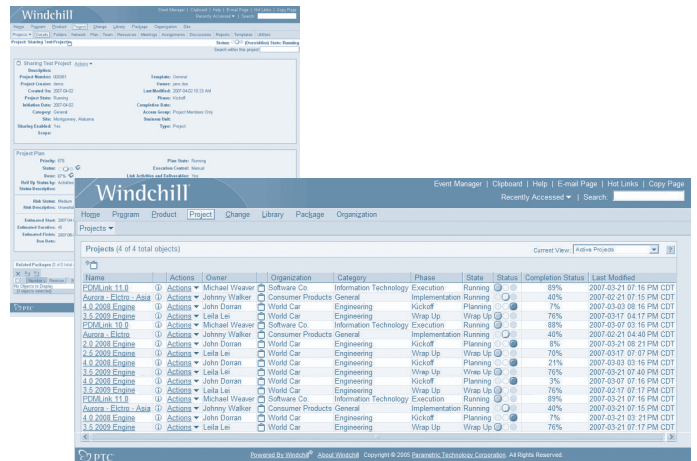
Windchill ProjectLink keeps your team moving forward on the right-activities by automatically assigning tasks and providing real-time access to current project data. With Web-based tools to capture good ideas and best practices from internal and external participants, Windchill ProjectLink helps companies take full advantage of all available knowledge.

### Drive Adherence to Corporate and Industry Standards

Using pre-built, workflow-driven project and document templates, Windchill ProjectLink helps ensure cross-functional processes are in accordance with prescribed standards. It also formalizes critical quality management methodologies such as Six Sigma, advanced product quality planning (APQP) and ISO 9000.

### Improve Product Portfolio Decision-making

Portfolio management is the product development function that links business strategy to product strategy and execution – enabling companies to select the best projects to work on. Windchill ProjectLink helps managers make better trade-off decisions by continuously measuring the risks and progress of every emerging product.



Easy-to-use Web-based interface provides access to your projects, project information, tasks, and meetings as well as schedules, milestones, and activity status.

## Features

### Project Information Management

- Provides folder-based storage and controlled access to requirements, specifications, CAD models, design notes, manufacturing plans, part definitions, bills of materials and more
- Optionally add Windchill® PDMLink® for comprehensive product content management, out-of-the-box change management procedures and support for key business processes
- Document check-in/check-out with iteration history
- Document and template standardization
- Automated or ad hoc routing of documents and parts for review and approval
- Access control rules for individual documents, parts and folders
- XML-based import and export of project information to and from other projects, corporate enterprise systems or other exchanges
- Create, review, distribute and track packages of Windchill managed information (e.g., documents, parts, CAD models, associated meta data) for sharing with external partners

### Business Process Automation

- Powerful, flexible workflow engine and reusable workflow templates to automate common processes
- Supports methodologies such as PACE™ and Stage-Gate
- Tailorable forms define process tasks and tie together relevant information
- Automatic distribution of tasks to team members
- Action Item capture and resolution management
- Enforce deadlines with escalation policies for proactive and follow-up notifications
- Task reassignment helps project leaders relieve bottlenecks and facilitate workflow
- Advanced workflow definition capabilities to automate proprietary processes, including support for nested processes, process referencing, conditional branching, voting, synchronization, timers, iterative loops and response-based routing

### Web-based

- Web-based interface presents all information relevant to specific roles, responsibilities and tasks
- Personalized subscription and notification keep development teams attuned to the latest changes
- Project portals to dedicated workspaces enable the project team to track the project schedule, deliverables, status and associated tasks
- Collaborate interactively through online discussions and live Web-based meetings
- User portals offer personalized views of specific projects and activities
- Uses standard Web browser

### Self-Administration

- Utilize corporate and functional templates to create, configure and reuse projects information without relying on IT
- Invite team members by role using email
- Information organized in a logical, project-centric manner
- Set up folders and add content directly from your desktop

### Embedded Visualization

- Identify, view and utilize product information, without requiring the underlying authoring applications
- Locate and verify content quickly and easily with 3D thumbnails
- Provide feedback using embedded markup capabilities
- Optionally automate document publishing to PDF format

### Integrated with Other Applications

- Supports Pro/ENGINEER®, Arbortext®, CADD5®, AutoCAD®, CATIA® V4, CATIA® V5, Inventor®, Mathcad® and SolidWorks®
- Support for major ECAD packages from Mentor®, Zuken®, and Cadence®
- Drop-down menus within Microsoft Office applications
- Bi-directional Action Item interoperability with Microsoft® Excel
- Download and upload data with Microsoft Project
- Microsoft Outlook email and meeting integration
- Optionally integrate with Rational® ClearCase® to share binaries or software code

### Scalable and Secure

- Fully scalable, capable of handling thousands of concurrent users
- Three essential levels of security for managing projects on the Internet:
  - User Authentication: using standard Web server authentication
  - Project Access: seal off activity around discrete projects
  - File Access: enable access control rights for individual folders, documents, parts and CAD models

### Platform Specifications

- Server Operating Systems:
  - Microsoft Windows (32-bit and 64-bit): XP, Vista, Windows 2003 Server
  - Unix (32-bit and 64-bit): Solaris, HP-UX, AIX
  - Linux (64-bit): Red Hat Enterprise Linux 4
- Browser: Internet Explorer v6.0 and higher, Mozilla Firefox v2.0 and higher
- Database: Oracle 10g and SQL Server 2005
- Languages: English, Chinese (Traditional), Chinese (Simplified), French, German, Italian, Japanese, Korean, Spanish

To learn more about Windchill ProjectLink, please visit our website at:  
<http://www.single-sourcing.com/>



Note: The timing of any product release, including any features or functionality, is subject to change at PTC's discretion

© 2009, Parametric Technology Corporation (PTC). All rights reserved. Information described herein is furnished for informational use only, is subject to change without notice, and should not be construed as a guarantee, commitment, condition or offer by PTC. PTC, the PTC logotype, Pro/ENGINEER, Windchill and all PTC product names and logos are trademarks or registered trademarks of PTC and/or its subsidiaries in the United States and in other countries. All other product or company names are property of their respective owners.