

# Windchill® ProductPoint®

## Product Data Management for Small and Medium Businesses

Windchill ProductPoint is a collaboration solution that extends the capabilities of Microsoft® SharePoint® technologies by enabling product development teams to share CAD and other structured data.

Windows® SharePoint Services is a highly effective technology specifically designed to facilitate simple, file-based collaboration. However, it doesn't support rich CAD authoring applications that create complex information assets and technical documentation and perform sophisticated engineering calculations—all of which constitute the lifeblood of manufacturing organizations.

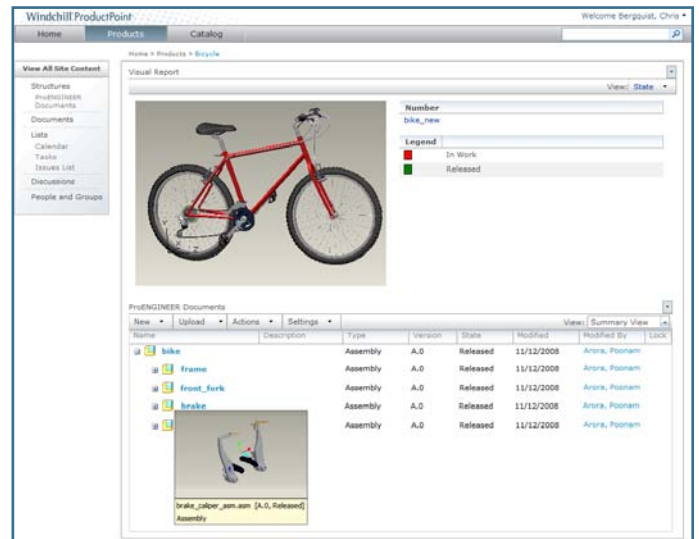
Windchill ProductPoint extends the capabilities of SharePoint by enabling the sharing of CAD and other structured data among teams. Windchill ProductPoint offers vaulting, sharing, visualizing and mark-up capabilities for product data through its multi-CAD support—a powerful capability that yields significant benefits.

Consider the implications of Windchill ProductPoint support for Pro/ENGINEER®2. Small engineering workgroups, operating without a product data management solution, who rely on shared network folders or FTP sites for CAD data collaboration, lack versioning, searching and access-control capabilities. As such, these groups are either subjecting valuable product information to overwriting risks, wasting time working with outdated file versions, or using incorrect specifications in manufacturing operations.

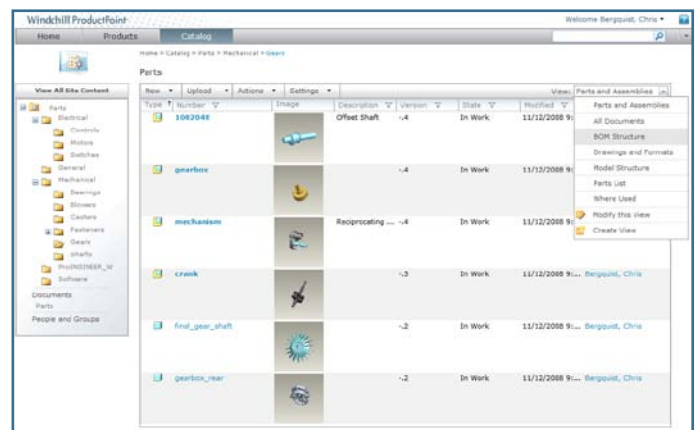
However, with Windchill ProductPoint, these same organizations can handle Pro/ENGINEER files including performing CAD vaulting, sharing information and reusing data in ways that both ensure data integrity and enable concurrent engineering. Furthermore, Windchill ProductPoint offers support for AutoCAD® as well as Mathcad®.

Plus, the synergy between Windchill ProductPoint and Pro/ENGINEER®2 renders possible Web 2.0 communication benefits that are inherent in social product development. Specifically, by leveraging tools such as toaster pop-up notifications, online presence detection, model wikis and collaboration spaces, users enhance knowledge-sharing, data-capture and team collaboration.

The result is a more productive environment, one in which CAD data is used more effectively across organizations to improve product development processes like design creation and design outsourcing.



Windchill ProductPoint supports sharing, versioning, and viewing of multi-CAD data.



A catalog of standard part designs in Windchill ProductPoint.

### Key Benefits

- Greater collaboration, productivity and effectiveness in the utilization and leveraging of CAD data both internally and externally
- Minimal learning curve due to familiar Microsoft environment
- Fast, easy deployment on top of an existing or new SharePoint Server reduces total cost of ownership

## Features<sup>1</sup>

### Multi-CAD Support and Social Product Development Optimize Data Usage and Value

- CAD vaulting for small workgroups
- Embedded visualization of CAD files
- Create/view/edit model wikis in embedded browser in Pro/ENGINEER<sup>2</sup>
- Create/view/edit model collaboration spaces<sup>2</sup>
- Access collaboration spaces from user home page<sup>2</sup>
- Toaster pop-up notifications for server and team events<sup>2</sup>
- Enable/disable pop-up notifications and set options<sup>2</sup>
- Online presence detection in File > Open<sup>2</sup>
- Mathcad
  - Intelligent management of Mathcad files and relationships<sup>3</sup>
    - Support Calculations Library
    - Save/retrieve Mathcad structures
    - Manage relationships with Pro/ENGINEER analysis features
  - Open Mathcad files directly from ProductPoint
  - Search against indexed Mathcad content
- AutoCAD
  - AutoCAD 2009 and 2010 (Standard and Mechanical Editions)<sup>5</sup>

### Quickly populate legacy data into Windchill ProductPoint

- Bulk loads data from network drives
- Bulk loads Pro/ENGINEER, as well as non-Pro/ENGINEER files<sup>4</sup>
- Ensures data integrity in CAD files from Pro/INTRALINK<sup>®</sup> 3.x
- Enables configuration of:
  - Pro/ENGINEER parameter mapping to Windchill ProductPoint attributes
  - File system folders to specific designated locations in Windchill ProductPoint (e.g., product sites, catalog sites, sub-folders)
  - Renaming of files with duplicate names
- Supports iterative, multi-pass approach, filling in missing dependencies in subsequent passes

### Enhanced Usability

- Operate on multiple selected items (Move, Copy, Save As, Lock/Unlock, Rename, Release, Export to spreadsheet)
- Delete library
- Multiple structure library and template support
- Create/delete sites
- Multiple document upload
- Partially delete structure
- Access to properties page from Pro/ENGINEER

### Version Management

- Delete minor versions
- Set policy to automatically delete minor versions on release

### Basic Configuration Management

- Custom numbering schemes
- Custom version schemes and modify version labels
- Latest release configuration support
- Set configuration for structure views and Where-Used report
- View structure with combination of latest and non-latest items

### Platform and Language Support

- Server support
  - Windows Server 2003 (32-bit SP2, 64-bit SP2) and 2008 (64-bit)
  - SQL Server (Workgroup, Standard and Enterprise Editions): 2005 SP2 and 2008 SP1
  - Windows SharePoint Services (WSS) 3.0 SP2
- Client support
  - Operating systems: Windows XP SP2 (32-bit and 64-bit) Windows Vista SP1 (32-bit and 64-bit) and Windows 7
  - Browsers: Internet Explorer<sup>®</sup> 7 and 8
  - Applications
    - Pro/ENGINEER Wildfire 4.0 M100 and Pro/ENGINEER Wildfire 5.0
    - Mathcad 14 M035
    - ProductView™ Lite 9.1 M020 (bundled)
    - Microsoft Office 2003 and 2007

### Supported languages

- English, French, German, Italian, Japanese, Korean, Simplified and traditional Chinese, Spanish, Russian

<sup>1</sup>Some features and capabilities are intended for future releases of Windchill ProductPoint. Future plans subject to change at PTC's discretion.

<sup>2</sup>Requires Pro/ENGINEER Wildfire 5.0.

<sup>3</sup>Requires Mathcad 14 M035.

<sup>4</sup>Requires Pro/ENGINEER Wildfire 4.0 M100 or Pro/ENGINEER Wildfire 5.0.

<sup>5</sup>Requires Windchill Integration to AutoCAD for PTC SharePoint products.