

Windchill® Web Parts for SharePoint®

Gain Immediate Access to Accurate, Critical Product Information within a SharePoint Environment

Accelerating time-to-decision is a growing imperative for manufacturers of all sizes. Making faster, smarter decisions is a critical element of cost- and time-efficient product creation. Windchill Web Parts for SharePoint accelerates decision-making by providing a single, collaborative view of both Windchill data and other critical product information.

Cost containment, process and task efficiencies, competitive pressures – and more – all demand accurate and up-to-date information. Whether it's company executives, engineers, manufacturing operations, or upstream suppliers – everyone must monitor status and changes, review parts and product designs, and access up-to-date, decision-critical documents. Windchill Web Parts for SharePoint brings all this information into a familiar SharePoint interface. Having a central point of access lowers costs, improves productivity, and simplifies processes.

Key Benefits

Finish Projects Faster and at Lower Cost

Windchill Web Parts for SharePoint becomes a strong element of project efficiency and cost containment. Reviews happen more quickly. Decisions are made and communicated without delay. Budgeting is more accurate. Planning is more efficient.

Present a Single Point of Decision-Making Knowledge

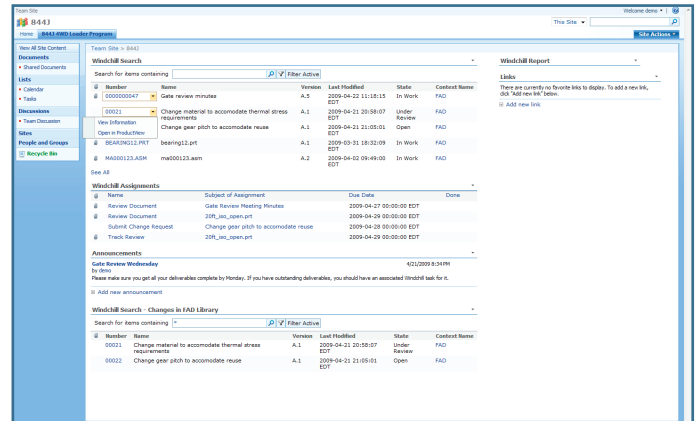
Decision-makers gather their critical knowledge from a broad universe of systems and applications. With Windchill Web Parts for SharePoint, that information is presented in a single location – your SharePoint Web pages.

Broaden Collaboration

Windchill Web Parts for SharePoint makes all relevant and approved information available to additional participants and stakeholders in the product development lifecycle.

Improve Worker Productivity

Productivity increases as impediments to collaboration are removed. Windchill Web Parts for SharePoint enables this productivity boost by presenting a single environment for collaboration, revision, review and approval.



Multiple Windchill Web Parts can be added to a SharePoint page.

Streamline the Process

Eliminate the delays, the lack of synchronization, and the impediments to collaboration that slow projects and increase costs.

Features

Executive Dashboard

- Provide an essential decision tool for executive leadership and engineering managers
- Deliver a single, comprehensive view of Windchill Business Reports, together with reports from ERP, sales and corporate finance systems
- Immediately notify managers when their approval is needed

Searches

- Easily retrieve critical product information that impacts decision-making and product completion
- Simplify finding precise information, using flexible search parameters
- Use “sticky searches” of important data to save and share often-used search parameters

Full Application Interaction

- Interact with many Windchill modules alongside other PTC products as well as enterprise applications like ERP
- Enable multi-application visibility
 - View information in both ERP and PLM to optimize the production schedule
 - Monitor order status for critical parts
 - Investigate the overall impact of a design change
 - Review vendor information in multiple systems before approving a selection
- Compatible with Windchill ProductPoint®

Markup and Revision

- View and mark up models using the built-in ProductView capabilities
- Check-out, revise and resubmit documents to the Windchill server in conjunction with Windchill Desktop Integration

Authentication

- NTLM Authentication imposes a high level of security within the Windchill Web Parts for SharePoint environment
- Single sign-on simplifies cross-application access
- Based on permission levels you define, you can grant access across organizations, including Program Management, Finance, Marketing, OEMs and Suppliers

Simple Installation and Setup

- Documentation provides specific help for system administrators who either don't know SharePoint, or don't have time to develop familiarity with the SharePoint environment

Platform Specifications

- Microsoft Office SharePoint® Server (MOSS) 2007
- Windchill PDMLink® 9.1 M010, Windchill ProjectLink™ 9.1 M010
- MS Windows® 2003 server
- Windows SharePoint Services 3.0 SP1 (x86) (x64)



To learn more about Windchill WebParts for SharePoint, please visit our website at:
<http://www.single-sourcing.com/>

NOTE: The timing of any product release, including any features or functionality, is subject to change at PTC's discretion.

© 2010, Parametric Technology Corporation (PTC). All rights reserved. Information described herein is furnished for informational use only, is subject to change without notice, and should not be construed as a guarantee, commitment, condition, or offer by PTC. PTC, the PTC logotype, Windchill ProductPoint, Windchill, Windchill PDMLink, Windchill ProjectLink, ProductView and all PTC product names and logos are trademarks or registered trademarks of PTC and/or its subsidiaries in the United States and in other countries. All other product or company names are property of their respective owners.