

Arbortext® CSDB for S1000D

End-to-end, out-of-the-box solution to comply with S1000D requirements

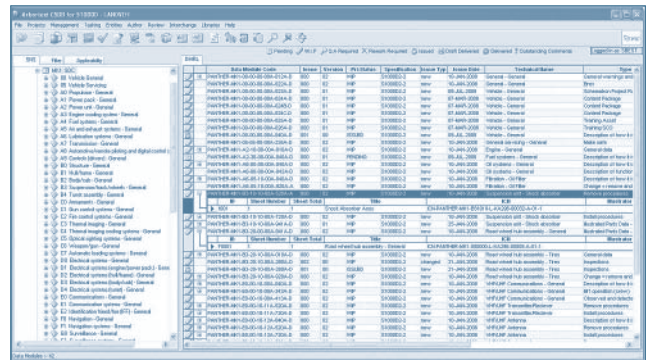
Arbortext Common Source Database (CSDB) for S1000D is a complete technical content management solution to support the S1000D international technical publications specification for the global Aerospace and Defense industry.

Arbortext CSDB for S1000D enables users to: rapidly create and simultaneously manage the business rules for multiple S1000D projects; manage all aspects of S1000D data modules; and publish S1000D technical publications for both print and electronic IETP viewing. Content managed by Arbortext CSDB for S1000D can be directly repurposed for learning content management that's compliant with SCORM, and for provisioning management compliant with S2000M.

Key Benefits

Gain S1000D compliance in record time

- Leverage the industry's only integrated solution for S1000D, to quickly configure, deploy and manage all aspects of your S1000D projects
 - Configurable standard numbering systems to improve data management and reduce data errors
 - Interactive illustrations managed as a standard database element for easy point-and-click handling
- Accelerate projects by easily expanding the Arbortext CSDB for S1000D solution where needed, while avoiding multi-vendor conflicts and high integration costs
 - Comprehensive authoring capabilities for both text and illustrations with animations
 - Structure a single CSDB environment to concurrently support multiple projects and multiple issues
 - Import data modules from external sources for content reuse within Arbortext CSDB for S1000D
- Further extend the Arbortext CSDB for S1000D solution by repurposing data modules to comply with product training and provisioning management requirements, including SCORM and S2000M mandates



Data module codes (DMC) are generated to produce the data module requirements list (DMRL), the central management resource within the Arbortext CSDB for S1000D.

Achieve success with the market-leading solution

- Leverage the industry's leading S1000D solution with the highest number of active S1000D installations, supporting the industry for more than 10 years

Features and Capabilities

Project Setup and Project Management

Arbortext CSDB for S1000D provides wizards to generate business rules and project requirements to simplify project setup, configuration and management, and to produce the necessary supporting data libraries and SGML DTD or XML schema mappings for the selected S1000D Issue.

- Standard Numbering System (SNS)
- Data module coding (DMC) schemes
- Entity or illustration coding (ICN) schemes
- Project default values
- Multi-language support for English, German, Portuguese, Russian and simplified Chinese

Data Module List (DML) – The DML is the central management resource within the CSDB.

- Data Module Codes (DMC) are generated or imported from other sources
- All DMLs are validated against the project rules, taking into account SNS compliance, version control, and coding rules
- Full audit trail of DML changes is maintained throughout the lifecycle
- Data module and entity production is managed from the DML, with extensive filtering mechanisms to ensure efficient navigation
- Status information of every data module is readily available in the DML views and is supplemented with flexible management reporting capabilities
- Schedule, prioritization and workload data can be entered into each data module, with actual dates triggered by system events
- DML functions can be applied to ranges of data modules

Tasking – Data module production tasks are allocated to authors by the CSDB manager. Tasks may include schedule requirements and lower-level tasks supported by source or reference information.

Data Interchange – S1000D data interchange mechanisms leverage wizards that support the export and import of data with customers, partners and suppliers. Extensive validation routines and associated reports provide full visibility of status data to be exchanged prior to import. Supported files within the interchange specification are generated automatically, including data dispatch notes and data module lists.

CSDB Search – Supports extensive DML search, regardless of the size or complexity of the project.

Web-based Access – Provides controlled Web access to CSDB for review and comment, for local and remote authorized users.

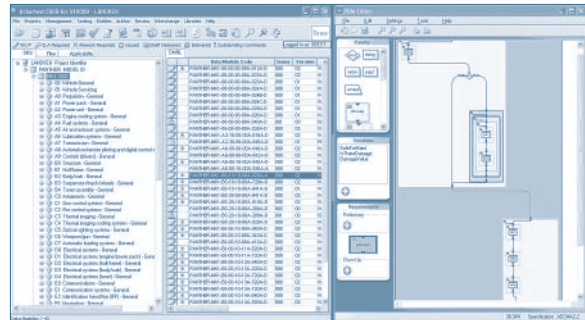
Entity Support – Fully manages the relationships between data modules and their supporting entities, such as illustrations, 3D graphics, and multimedia objects. For each data module in the DML, users can easily identify and define ranges and preview supporting entities.

Module and Entity Creation and Editing

Arbortext CSDB for S1000D provides a desktop application used by technical authors, illustrators, reviewers and training content producers to check work in and out of the CSDB.

Arbortext Authoring Interface for S1000D provides users with all their assigned data module production requirements and associated supporting information.

- Create content from CSDB library information
- Distribute the database-controlled environment to users carrying out discrete functions
- Associate comments with rework tasks
- Control verification and issue



Process data module (PDM) editor allows authors to use a graphical interface to simplify the creation of complex PDMs for technical publications.

Arbortext Editor Integration – Arbortext Editor is the industry's leading authoring software for A&D and has been fully integrated with Arbortext CSDB for S1000D when used with the Arbortext Authoring Interface for S1000D. With this integration, technical authors can deploy Arbortext Editor to create and edit data modules within S1000D projects.

- SGML/XML authoring – Supports a series of productivity features with the underlying Common Source Database (CSDB), including project specific options for SGML rules validation.
- Fragments – Automatically populates constructs and fragments with a single mouse click, including referenced data modules and referenced entities.

Arbortext IsoDraw Integration – Arbortext IsoDraw is the industry's de-facto standard technical illustration software for creating compliant S1000D CGM graphics, and has been fully integrated with Arbortext CSDB for S1000D. With this integration, project managers can allocate tasks to illustrators, configure tasks to automatically update finished illustrations into the publications, insert graphical hotspots, and cross-reference hotspots.

Arbortext Reviewer for S1000D – Complete end-user preview of the data module, enabling authors to preview, via web-browser, the formatted technical publication, for paper and IETP formats, during the editing process.

Process Data Module Editor – This fully featured editor for the creation of S1000D process data modules enables authors to create interactive electronic technical publications (IETPs) without the need to program-in specialist languages. It utilizes an intuitive graphic builder to easily produce complex logic trees.

Information delivery

Arbortext Publisher for S1000D provides publishing capabilities to efficiently organize CSDB data modules and entities into complete version-controlled publications.

Advanced Applicability Filtering – Enables publications to be efficiently assembled for specific customers, system configurations and platform variants.

- Real-time status of all data modules within a publication
- Validation reports to ensure that, prior to a publication build, all necessary checks are performed

Document Viewing – Allows users to interact with S1000D-compliant publications in accordance with their project deliverables.

- Interactive electronic S1000D technical product information
 - The Arbortext IETP Viewer for S1000D enables readers to view, interact with, and comment on interactive electronic technical publications (IETP) produced by Arbortext CSDB for S1000D
- Fully composed S1000D page-oriented publications
 - Constructs entire publications on-demand using automated publishing processes and removes the need for desktop publishing applications and operators entirely
 - Provides a centralized set of print services, enabling the composition and production of hardcopy and PDF manuals from SGML and XML data modules

Standards Compliance

Arbortext Product Information Delivery Solutions for A&D have supported global S1000D projects since 1995, and feature the highest number of active installations. Arbortext CSDB for S1000D fully supports each version of the specification, up to and including Issue 3.0.

Arbortext product information delivery software for A&D provides integrated compliance solutions for S1000D, S2000M chapter 1, and SCORM

By extending the value of Arbortext CSDB for S1000D with the complete Arbortext product family along with the PTC Product Development System, you can gain even greater efficiencies – and enable further compliance – across your enterprise. Additional Arbortext product information delivery software for A&D include:

Arbortext Provisioning Manager enables the creation, delivery, receipt and review of Initial Provisioning data in accordance with S2000M, Def Stan 00-60 ISSP EDI requirements and ATA S2000.

Arbortext Parts Catalog Manager for S1000D enables the creation, delivery, receipt and review of Initial Provisioning data, in non-S2000M compliant environments.

Arbortext LSA Interface links logistics support analysis record (LSAR) maintenance tasks to data module codes within the Arbortext CSDB for S1000D. This software also allows Arbortext Provisioning Manager to acquire initial provisioning figure data and parts information from the logistics support analysis record.

Arbortext LCMS for S1000D extends the Arbortext CSDB for S1000D into a full-featured, SCORM-compliant Learning Content Management System (LCMS).



To learn more about how Arbortext can help your company create and delivery high-quality product information, please visit our website at:
<http://www.single-sourcing.com/>